



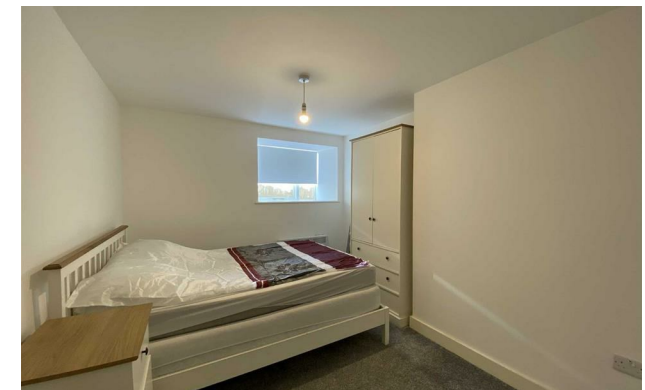
Jordan fishwick

2B Withington Road, M16 8AA
£975 Per Calendar Month



Withington Road Whalley Range M16 8AA

£975 Per Calendar Month




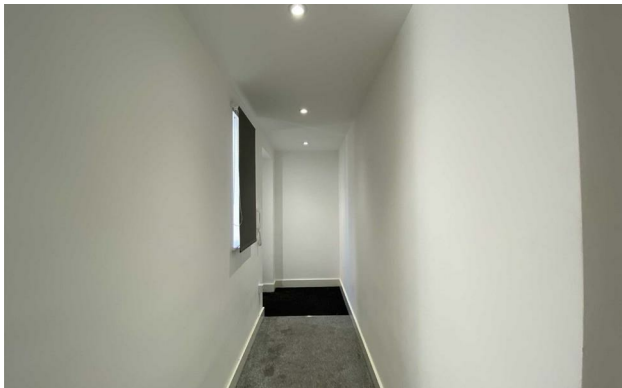
The Property

*****AVAILABLE AUGUST ***** Jordan Fishwick are delighted to bring to the rental market this development, ideally situated for Chorlton, the university and the city centre.

A spacious, newly converted, two double bedroom apartment situated in an iconic building, In brief the accommodation comprises: Entrance hall with useful storage, a large, well planned, open plan living dining kitchen with built in appliances, two double bedrooms both with king size beds and a family bathroom with separate shower. Lower ground floor apartment is fully furnished . Gated Parking . Young professional couples and sharers welcome! No Pets .Call 0161 393 7539.

- Available August
- Two Double Bedroom
- Large Open Plan Living Lounge
- Modern Kitchen
- Fully Furnished
- Council Tax Band 'A'
- Gated Parking
- Private Courtyard
- Trafford Bar Tram Stop
- 0.8 miles

Energy Efficiency Rating		
	Current	Potential
Very energy efficient - lower running costs		
(92 plus) A		
(81-91) B		
(69-80) C		
(55-68) D	52	52
(39-54) E		
(21-38) F		
(1-20) G		
Not energy efficient - higher running costs		
England & Wales	EU Directive 2002/91/EC 	





These particulars are believed to be accurate but they are not guaranteed and do not form a contract. Neither Jordan Fishwick nor the vendor or lessor accept any responsibility in respect of these particulars, which are not intended to be statements or representations of fact and any intending purchaser or lessee must satisfy himself by inspection or otherwise as to the correctness of each of the statements contained in these particulars. Any floorplans on this brochure are for illustrative purposes only and are not necessarily to scale.

Offices at: Offices at Chorlton, Didsbury, Disley, Hale, Glossop, Macclesfield, Manchester Deansgate, Manchester Whitworth Street, New Mills, Sale, Wilmslow and Withington